

Instructions for 11-0619-21 cube size control

Contents:

- Qty (1) Thermostat (11-0619-21)
- Qty (1) Instructions (17-3493-01)
- Qty (1) Bracket (A40304-001)
- Qty (2) Screws (03-1403-15)

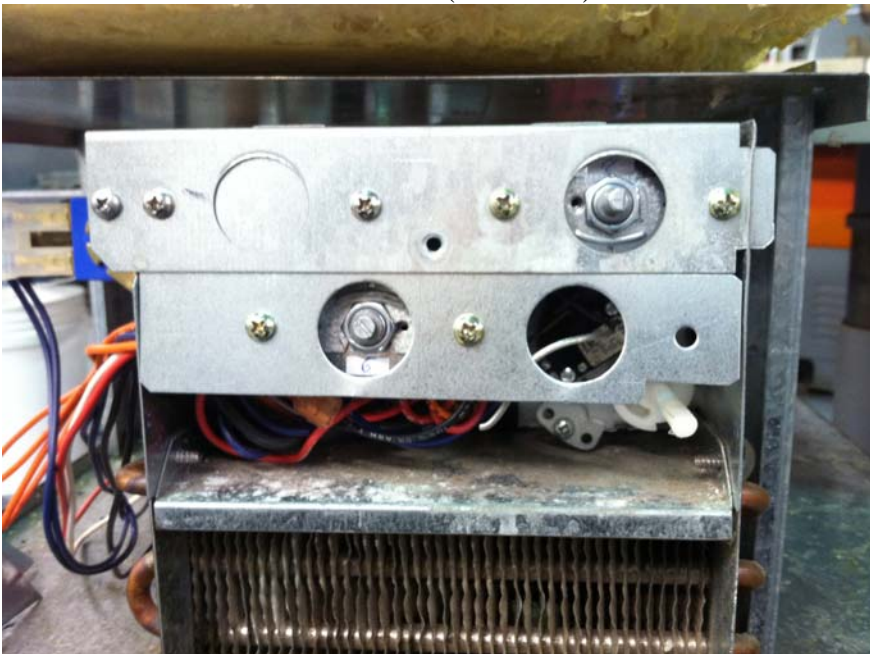
Tools needed: Phillips screwdriver

- 1) Remove control panel cover
- 2) Disconnect power, water & drain and uninstall unit
- 3) Remove screw to the left of cube size control holding controls mounting bracket to control box
- 4) Carefully slide the controls mounting bracket to the left and lower to allow access to the controls
- 5) Disconnect wires from cube size control
- 6) Remove 2 screws securing cube size control to bracket
- 7) Remove back panel
- 8) Remove cabinet from base pan to allow access to evaporator
- 9) Remove pig tail of cube size control from sensing well on evaporator
- 10) Remove & discard the failed cube size control
- 11) Route cap tube & pig tail of new cube size control to evaporator & secure the pig tail into the sensing well with a wire tie to assure it stays in place
- 12) Make sure cap tube is safely routed and will not vibrate against any metal objects
- 13) Reinstall cabinet and back panel
- 14) Reconnect water & drain
- 15) Reconnect wires disconnected in step 5. NOTE there are 2 different types of timers, electronic timers (models ending in "D") and electromechanical timers (white plastic cam type). For electronic timers connect as follows; Yellow to terminal 3 & Blue to terminal 6 (note term 4 is not used). For electromechanical timers (white cam type) connect as follows; Black to terminal 3, Red to terminal 6 and Blue to terminal 4.
- 16) Install new bracket using the original 2 screws removed in step 6

17) If the unit has a solid state timer and the model # ends in a “D” then mount the cube size control with the provided screws to the opening on the right (see below)



18) If the model # ends in any letter other than “D” and has a white plastic cam timer use the opening to the left to mount the cube size control (see below)



19) Make sure wires are secure and run test the unit to make sure the control is functioning properly-make adjustments as needed